

Love learning locally

Derbyshire
Dales

Derbyshire Adult Community Learning

January to April 2023
Courses

**Book
Now**



Booking, Payment and Fees

How to book and pay

Booking and payment for all our Community Learning courses is via our Eventbrite page derbyshireadulthoodeducation.eventbrite.com*

Help with online booking

If you struggle with online booking and payment we are here to help. Drop in to your local centre or give them a call. Centre contact details are on the back page. If you get the answer machine leave a message with your name and contact details and someone will call you back.

Course fees explained

Many of our 'Community Learning' courses have three different fee bands:

- Fee A: Full fee
- Fee B: Derbyshire Gold Card holders
- Fee C: Concessions for those on certain benefits/allowances

For more details on course fees and concessions visit www.derbyshire.gov.uk/coursefees or ask in your local centre.

Some courses may also have additional materials costs as indicated in the course listings. See course information on our Community Learning pages and Eventbrite for details.

Cancellations

If you need to cancel your place on a course you have booked on to, you can do it yourself on Eventbrite, contact the organising centre or email adult.education@derbyshire.gov.uk.

Please note that if you cancel your place on a course which has fees, the percentage of the fee that covers the Eventbrite costs is non-refundable (approximately 6%).

If for any reason we have to cancel a course, the full fee is refundable. If we have to change a centre-based course to an online course (for safety reasons) and you wish to cancel your place, the full fee is refundable.

* Except for courses that say to contact centre. We can help you with online booking if you need it.

Welcome to our Spring Programme

This brochure contains our Community Learning courses in Ashbourne, Matlock and the Derbyshire Eco Centre from January to Easter 2023. It includes details of our centre-based and outdoor courses and provides information on where to find out more about our online courses.

To find out more and book on a course simply go to www.derbyshire.gov.uk/coursesearch and click on **Community Learning** to search for a course. Simply scroll down the page to look for courses at a particular venue or use the menu on the left to search for courses by subject.

Here you will find further information about the course and a link to its Eventbrite page for full details and booking. See the back page for where to get help if you struggle with getting online.



Ashbourne

Ashbourne ACE Centre, Cokayne Avenue,
Ashbourne DE6 1EJ

The Ashbourne team can be contacted on ashbourne.ace@derbyshire.gov.uk or 01629 533696 for any additional information you require about Ashbourne courses, or for help with online booking. The office at Ashbourne ACE Centre is usually open on Mondays, Tuesdays and Thursdays during normal office hours and mornings only on Wednesdays.

For further information on any of the courses listed below and to book visit www.derbyshire.gov.uk/communitylearning

Scan the QR code to book



| Course Title | Wks | Day, Date and Time | Fee A | Fee B | Fee C |
|--|-----|--|-------|-------|-------|
| AMUSF Upholstery Information Session | 1 | Monday 27 March, 11am to 12noon | FREE | FREE | FREE |
| Art Workshop – Spring Pastels | 1 | Tuesday 21 February, 10am to 2.30pm | £31 | £29 | £16 |
| Design and Make a Piped Box Cushion | 2 | Wednesday 01 February to Wednesday 08 February, 10am to 2.30pm | £61 | £56 | £31 |
| Professional Curtains (Learn the techniques on a sample) | 2 | Wednesday 08 March to Wednesday 15 March, 4pm to 5pm | £61 | £56 | £31 |
| The Regions and Wines of Europe £ | 5 | Wednesday 11 January to Wednesday 08 February, 7pm to 9pm | £76 | £70 | £38 |
| The Regions and Wines of Europe £ | 5 | Wednesday 01 March to Wednesday 29 March, 7pm to 9pm | £76 | £70 | £38 |
| Upholstery and Furniture Renovation | 5 | Tuesday 10 January to Tuesday 07 February, 6pm to 9pm | £114 | £104 | £57 |
| Upholstery and Furniture Renovation | 5 | Thursday 12 January to Thursday 09 February, 9.30am to 12.30pm | £114 | £104 | £57 |
| Upholstery and Furniture Renovation | 5 | Thursday 12 January to Thursday 09 February, 1pm to 4pm | £114 | £104 | £57 |
| Upholstery and Furniture Renovation | 5 | Tuesday 28 February to Tuesday 28 March, 6pm to 9pm | £114 | £104 | £57 |
| Upholstery and Furniture Renovation | 5 | Thursday 02 March to Thursday 30 March, 9.30am to 12.30pm | £114 | £104 | £57 |
| Upholstery and Furniture Renovation | 5 | Thursday 02 March to Thursday 30 March, 1pm to 4pm | £114 | £104 | £57 |

Derbyshire Eco Centre

Porter Lane, Middleton, Wirksworth DE4 4LS

The Derbyshire Eco Centre team can be contacted on ecocentre@derbyshire.gov.uk or 01629 533038 for any additional information you require about Eco Centre courses, or for help with online booking. The office is usually open Monday to Friday during normal office hours.



For further information on any of the courses listed below and to book visit www.derbyshire.gov.uk/communitylearning

| Course Title | Wks | Day, Date and Time | Fee A | Fee B | Fee C |
|---|-----|---|-------|-------|-------|
| Bushcraft Survival | 1 | Saturday 18 February, 9am to 4pm | £57 | £33 | £10 |
| Carpet Bedding in a Seed Tray | 1 | Friday 17 February, 10am to 12noon | £12 | £11 | £4 |
| Ceramic Tiles £ | 1 | Saturday 04 March, 10am to 4pm | £30 | £26 | £9 |
| Family Learning – Den Building | 1 | Sunday 26 February, 10am to 12noon | FREE | FREE | FREE |
| Family Learning - Pumpkin Planting | 1 | Friday 24 February, 10am to 12noon or 1pm to 3pm | FREE | FREE | FREE |
| Hedgelaying | 1 | Saturday 11 February to Sunday 12 February, 9.30am to 4pm | £91 | £84 | £46 |
| Indigo Tie Dyeing £ | 1 | Sunday 16 April, 10am to 4pm | £30 | £26 | £9 |
| Inkle Weaving £ | 1 | Saturday 11 February, 10am to 4pm | £30 | £26 | £9 |
| Introduction to Joinery | 2 | Saturday 04 March to Saturday 11 March, 10am to 4pm | £84 | £76 | £43 |
| Markmaking and Mixed media Landscapes £ | 1 | Saturday 11 March, 10am to 4pm | £30 | £26 | £9 |
| Natural Dyes £ | 1 | Saturday 11 March, 10am to 4pm | £30 | £26 | £9 |
| Planting Snowdrops 'in the Green' | 1 | Friday 17 February, 1pm to 2pm | £6 | £6 | £2 |
| Portrait Photography | 1 | Saturday 28 January, 10am to 4pm | £30 | £26 | £9 |

£ These courses have additional materials costs. See course information on our website and Eventbrite for details

| Course Title | Wks | Day, Date and Time | Fee A | Fee B | Fee C |
|--|-----|--|-------|-------|-------|
| Pottery For All £ | 5 | Wednesday 11 January to Wednesday 08 February, 2.30pm to 5pm | £95 | £87 | £48 |
| Pottery For All £ | 5 | Wednesday 11 January to Wednesday 08 February, 6pm to 8.30pm | £95 | £87 | £48 |
| Pottery For All £ | 5 | Wednesday 01 March to Wednesday 29 March, 2.30pm to 5pm | £95 | £87 | £48 |
| Pottery For All £ | 5 | Wednesday 01 March to Wednesday 29 March, 6pm to 8.30pm | £95 | £87 | £48 |
| Printing Without Thinking £ | 5 | Monday 09 January to Monday 06 February, 2pm to 4.30pm | £54 | £47 | £17 |
| Printing Without Thinking £ | 5 | Monday 09 January to Monday 06 February, 6pm to 8.30pm | £54 | £47 | £17 |
| Printmaking – Creative Collographs £ | 5 | Monday 27 February to Monday 27 March, 2pm to 4.30pm | £54 | £47 | £17 |
| Printmaking – Creative Collographs £ | 5 | Monday 27 February to Monday 27 March, 6pm to 8.30pm | £54 | £47 | £17 |
| Rag Rug Making £ | 1 | Sunday 26 March, 10am to 4pm | £30 | £26 | £9 |
| Sowing Sweet Peas | 1 | Friday 27 January, 1pm to 2pm | £6 | £6 | £2 |
| Spinning £ | 1 | Saturday 14 January to Sunday 15 January, 10am to 4pm | £60 | £52 | £18 |
| Stained Glass – Colour and Light £ | 2 | Saturday 04 February to Sunday 05 February, 10am to 4pm | £59 | £52 | £18 |
| Stained Glass Weekend £ | 2 | Saturday 25 March to Sunday 26 March, 10am to 5pm | £71 | £61 | £22 |
| Tapestry Weaving £ | 1 | Saturday 01 April, 10am to 4pm | £30 | £26 | £9 |
| Terrarium Planting | 1 | Friday 27 January, 10am to 12noon | £12 | £11 | £4 |
| Unusual Seed Planting Workshop | 1 | Friday 03 March, 10am to 12noon | £12 | £11 | £4 |
| Willow Baskets Weekend £ | 1 | Saturday 18 March to Sunday 19 March, 10am to 4pm | £59 | £52 | £18 |
| Woodland Shelter Weekend Building Course | 1 | Saturday 18 March to Sunday 19 March, 9.30am to 4pm | £65 | £57 | £20 |

Matlock

Matlock ACE Centre, Steep Turnpike, Matlock DE4 3DP

For additional information about Matlock courses, or for help with online booking contact the Matlock ACE team on matlock.ace@derbyshire.gov.uk or **01629 533225**. The office is usually open Monday to Friday during normal office hours.



For further information on any of the courses listed below and to book visit www.derbyshire.gov.uk/communitylearning

| Course Title | Wks | Day, Date and Time | Fee A | Fee B | Fee C |
|--|-----|--|-------|-------|-------|
| Art – Drawing and Painting for Wellbeing | 5 | Monday 09 January to Monday 06 February, 10am to 12noon | £54 | £47 | £17 |
| Art – Drawing and Painting for Wellbeing | 5 | Monday 09 January to Monday 06 February, 1pm to 3pm | £54 | £47 | £17 |
| Art – Drawing and Painting for Wellbeing | 5 | Monday 27 February to Monday 27 March, 10am to 12noon | £54 | £47 | £17 |
| Art – Drawing and Painting for Wellbeing | 5 | Monday 27 February to Monday 27 March, 1pm to 3pm | £54 | £47 | £17 |
| Art Workshop – Step by Step Spring Flowers | 1 | Monday 20 February, 10am to 2.30pm | £31 | £29 | £16 |
| Evening Yoga and Relaxation | 5 | Wednesday 11 January to Wednesday 08 February, 6pm to 7.15pm | £48 | £44 | £24 |
| Evening Yoga and Relaxation | 5 | Wednesday 01 March to Wednesday 29 March, 6pm to 7.15pm | £48 | £44 | £24 |
| French Beginners (Term 2) | 5 | Thursday 12 January to Thursday 09 February, 1pm to 2.30pm | £40 | £36 | £12 |
| French Beginners (Term 2) | 5 | Thursday 02 March to Thursday 30 March, 1pm to 2.30pm | £40 | £36 | £12 |
| French Intermediate | 5 | Thursday 12 January to Thursday 09 February, 10am to 12noon | £53 | £47 | £17 |
| French Intermediate | 5 | Thursday 02 March to Thursday 30 March, 10am to 12noon | £53 | £47 | £17 |
| Lip Reading All Abilities | 5 | Tuesday 10 January to Tuesday 07 February, 1.15pm to 3.15pm | FREE | FREE | FREE |
| Lip Reading All Abilities | 5 | Tuesday 28 February to Tuesday 28 March, 1.15pm to 3.15pm | FREE | FREE | FREE |

| Course Title | Wks | Day, Date and Time | Fee A | Fee B | Fee C |
|---|-----|--|-------|-------|-------|
| Natural Cleaning – Make your own Products £ | 1 | Wednesday 18 January, 6pm to 9pm | £17 | £15 | £5 |
| Pilates | 5 | Friday 20 January to Friday 17 February, 9am to 10am | £38 | £35 | £19 |
| Pilates | 5 | Friday 03 March to Friday 31 March, 9am to 10am | £38 | £35 | £19 |
| Spanish Beginners (Term 2) | 5 | Wednesday 11 January to Wednesday 08 February, 10.30am to 12noon | £40 | £36 | £12 |
| Spanish Beginners (Term 2) | 5 | Wednesday 01 March to Wednesday 29 March, 10.30am to 12noon | £40 | £36 | £12 |
| Spanish Improvers | 5 | Friday 13 January to Friday 10 February, 1pm to 2.30pm | £40 | £36 | £12 |
| Spanish Improvers | 5 | Friday 03 March to Friday 31 March, 1pm to 2.30pm | £40 | £36 | £12 |

£ These courses have additional materials costs. See course information on our website and Eventbrite for details



Our Online Courses

If you can't attend one of our centre-based courses an online course may work for you. Courses coming up this term include:

- Art and craft courses and workshops
- Brightside courses
- Careers workshops
- German, Italian and Spanish courses at various levels
- Health and wellbeing courses including complementary therapies
- Lip reading
- Murder mysteries
- Tai Chi



If you are not sure about online learning, sign up for one of our **FREE online taster sessions**. These are an opportunity to find out if this style of learning suits you.

Our **live online courses** are delivered using freely available video conferencing software, usually Microsoft Teams. We make it as easy as possible for you to join a course, whatever device you have. You will be sent a link a few days before the course together with information about any resources you need for the course. Your tutor will guide you through the course activities.

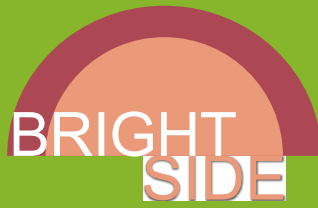
Our **self-paced courses** are online workshops that you can work through at your own pace at any time during a 30-day period. They are hosted on a website called 'Nearpod'. You just click on the link provided and it takes you straight in to the course.

For full details of all of our current online courses visit www.derbyshire.gov.uk/communitylearning and scroll down for the links to our **live online courses** and **self-paced courses** collections on Eventbrite.

Please read course details carefully before booking to check that the content and level is suitable for you. If unsure please email adult.education@derbyshire.gov.uk with your question and contact details and someone will get back to you.

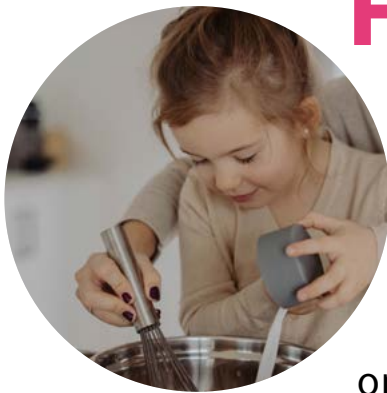
Brightside Mental Health

One in four of us experience mental health problems at some time in our lives. Brightside courses are designed for anyone with mental health difficulties or emotional stress, e.g. suffering from anxiety, depression, emotional or psychological, stress or isolation, low confidence and/or self-esteem.



There are a variety of courses to choose from across the county including cookery, healthy eating, gardening, poetry, creative writing and exercise. Courses include both online and centre-based options. Look out for Brightside courses in our brochures and visit www.derbyshire.gov.uk/BrightSide

Family Learning



Our family learning courses are a fun way to enjoy time together whilst learning new skills. Courses are suitable for parents/carers/grandparents and school aged children. See www.derbyshire.gov.uk/familylearning for more information. Please read the course information on Eventbrite for age suitability.

Making Choices

If you are thinking of going back to learning and maybe working towards a qualification, attending a 'Making Choices – Step into Learning' session will help you to find out your level of working and help decide on the options available.

Contact your local centre to book on to a session or email makingchoices@daces.derbyshire.gov.uk



Keeping you and your loved ones safe

You may wonder why, when you book on a community learning course, you are asked to watch a video about **Prevent**, the government strategy to safeguard people and communities from the threat of extremism and terrorism. You may think that there are no terrorists or extremism in Derbyshire or that it won't affect you.

Prevent referrals in Derbyshire have increased in the past year, with Counter Terrorism Police being particularly concerned about:

- Self-initiated terrorists (S-Its)
- Online extremism
- Extreme right-wing terrorism
- Islamist terrorism

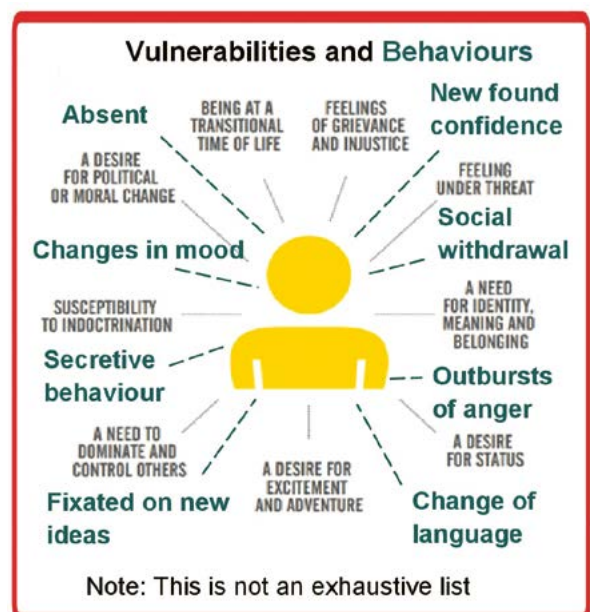
The ongoing COVID pandemic has resulted in some people being isolated and spending more time online. This includes people who are the most vulnerable to being drawn into supporting extremist beliefs.

In Derbyshire, the highest number of referrals in this past year were:

- from the police and education providers (including DACES)
- for young people aged between 12 and 16
- in Derby City, followed by Amber Valley and then Chesterfield

Social media and messaging sites can be used to reach out to vulnerable and young people and can communicate extremist messages. You might not be a key target for those wanting to draw people into extremism and terrorism, but someone in your family might be. The diagram (right) shows some things to look out for.

If you are worried that someone you know may be being drawn into extremism or terrorism, talk to your tutor or any of our staff **today.**



Supporting you to learn

Tell us about your needs when enquiring or booking on a course – we will always work to meet the needs of each learner. Our Eventbrite booking form asks for details of any disability or learning difficulty you may have. If you request it, someone will be in touch to discuss your needs and ask what we can do to help your learning.

All additional support provided is based on individual assessment. For detailed information about the support that we can provide, including financial help and learning support, visit derbyshire.gov.uk/theguide or contact the centre providing your course.



Contact us

For more details about a particular course or venue,
or help with online booking:

Ashbourne ashbourne.ace@derbyshire.gov.uk 01629 533696

Derbyshire Eco Centre ecocentre@derbyshire.gov.uk
01629 533038

Matlock matlock.ace@derbyshire.gov.uk 01629 533225

For all other enquiries, comments or complaints contact:
adult.education@derbyshire.gov.uk

Please be aware that our centres are not open every day. If you get the answer machine please leave a message with your name and contact details and someone will call you back.

For further information or to get a copy of this brochure in a community language, on audio tape or in large print please call your local ACE centre.

The details in this brochure are correct at the time of going to print.



Education & Skills
Funding Agency

