

# News And Views



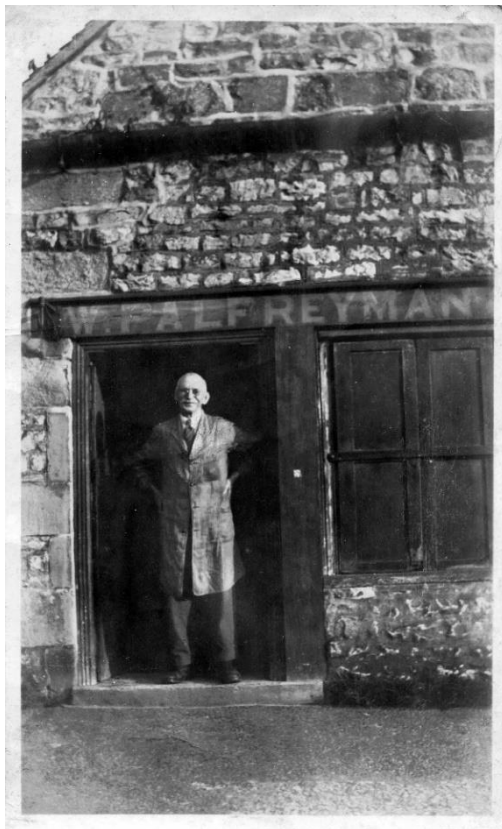
[www.hartingtonvillage.com](http://www.hartingtonvillage.com) Digital Hartington [www.hartingtonvillage.com](http://www.hartingtonvillage.com)

Vol 10, Issue 3

July/Aug 2020

## Beresford Tearoom and Post Office (previously part of Knowle Cottage)

Knowle Cottage, like so many other buildings in the village, their origins are lost in history. There is no doubt that parts of this cottage, or cottages (we know it used to be two) are very old. Some used to say it was as old as the church (well the old folks were never far from wrong) Extract- "Alsop's Lamp"- Ron Riley.



It is thought it was built as a single story building with a thatched roof in the 1300's. Later, the roof was raised and a second storey added; the original Cruck beams can still be seen.

Prior to 1901 the occupants are not known; Wilfred Palfreyman, aged 30 lived here with his wife Elizabeth and children Fred-aged 7, Edie-aged 5, Hilda- aged 3 and William aged 2.

In 1945, Edward (Ted) Hall, recently demobbed, wanted to return to his pre-war job- that of a butcher in Leek. His job was not available but heard that the butcher in Hartington was in bad health and wanted to retire. Ted had no transport at this time so he walked to Hartington from Leek and made arrangements for the tenancy of the house and business.

Mr Palfreyman and his daughter Edie lived in the main house until the Hall family was able to purchase both the shop and Knowle cottage.

The property comprised of the shop (now Tearoom and Post Office), living accommodation, staircase leading to two bedrooms, a scullery with access to the rear yard where there was a slaughterhouse and other cow sheds.

All carcasses had to be carried down the yard and through the living area to the shop.

Some of the older residents who lived in the village at this time will have many memories of this era in the village's history- a few to mention.

Ted would slaughter his animals, usually Monday morning (or afternoon depending on when Arthur Gee returned from Bakewell market). The school children waiting for the North Western bus outside the Devonshire Arms to take them to school at Buxton would hear the squeals of the pigs as they were being slaughtered. There was an abundance of cow and sheep eyes which some of us would take in plastic bags to school to use in our Biology lessons for dissection. The picture here shows Ted at Low End Farm Sheen with Tom Critchlow having slaughtered a pig using boiling water on the skin to remove the bristles, which would then be scraped off.



Bullocks would be brought to the yard, on one occasion a bullock escaped and ran around the pond eventually ending its' trip wedged between some vehicles outside Bassett's garage (now Hartdale Motors)

The boys in the village would go and ask Mr Hall if they could have a pig's bladder to blow up and tie to use as a football in the village square.

The quality and taste of Mr Hall's Pork Pies was renowned – a visit from Phillip Harben, a BBC TV celebrity cook with his wife confirmed this. Not to be outdone Mrs Hall's sausage recipe was included in a village recipe book- see below.

When Ted retired from the Butchers shop, Knowle cottage was bought by Lindsay Porter. In 1978 Malcolm and Beth Wain bought the cottage and the shop area was owned by Mr Alistair Sears. He opened a gift shop in which Mrs Lansbury worked. Later the shop was returned to a butcher by Harold Ball and Mick Partridge, and then again Alistair reopened as a gift shop. Mr and Mrs Wain left Knowle Cottage in 1997.

The shop was purchased by Robert Horsnall with Sue Bruce in March 1987 and opened as a Tea Room.

Sue became Postmistress when the Post Office relocated to the Tearoom. The post office is one of our cherished and valued services supporting, not only Hartington, but the wider community for many miles. It thoroughly deserves national recognition when in 2003, won the "Best Rural Post Office in Great Britain" both regionally and nationally. In 2004 was regional Runner up.

Our thanks go to the following people for the information within this article, Jennifer Brindley (nee Hall), Malcolm and Beth Wain and Sue Bruce.

**Mrs Hall's Sausage-** Mr and Mrs Hall were renowned for their sausages- this is one of their recipies-

7lbs. Lean pork (boned and rindless); 3lbs of fat pork (boned and rindless) 1oz of pepper, 3oz of salt; 2lbs bread -soak this in water- Mince all these ingredients together.

**"Vicars Letter"-** From Biggin Church Warden-It has been a strange couple of months and things will not be the same as they were before lockdown for a long while to come. There have been lots of challenges that our communities have met with kindness and by caring for one another. In some ways the virus, that has seen us stuck at home, has made community more important than ever. It has also meant that we've had to do things differently and be more creative. It's become okay to express feelings of anxiety and loneliness in a way that it wasn't before. Looking at the news it is impossible not to worry about what the economic toll of Corvid 19 might be. There are so many insecurities and problems that the virus has exposed across society. As a Christian, those of you who know me, know that my faith does not give me an unquestioning mind set that allows me to skip happily through life thinking that everything will be okay. I am often challenged and no doubt challenging in turn. Faith is not a crutch to lean on and it supplies no easy answers. C.S. Lewis the writer of the Narnia stories summed it up beautifully, "Life with God is not immunity from difficulties, but peace in difficulties" Whatever your difficulties might be at the moment, whatever fears and changes you might be facing, whether you are of faith or not "the peace of God, which surpasses all understanding, will guard your hearts and minds through Christ Jesus." (Philippians 4:7). Together- as a community- with kindness and creativity, we can face whatever new challenges await us during 2020 Stay well. Julia

### **Hartington Surgery- Derbyshire's NHS is here to help you**

During the coronavirus pandemic, our staff have been working hard to ensure that all patients who need urgent care – not just those with coronavirus – have been able to get it. To avoid unnecessary contact, some non-urgent appointments and surgeries have been postponed and others delivered differently using technology. We will continue to ask patients to attend face-to-face services only when it is really necessary, and where it can be done safely without putting our patients, the public or our staff at greater risk of catching coronavirus. Where possible, appointments will continue to be offered using remote services such as a video or phone consultation. If you visit Hartington Surgery for a pre-booked, face to face, appointment, please wear some form of face covering, or



mask, for added protection to reduce the risk of transmission of Covid 19. Clinical staff at the Surgery will also wear a mask and appropriate PPE.

If you feel unwell or have hurt yourself, you can still get the care and treatment you need. It's vital that if you're having a potentially life-threatening medical emergency, such as a heart attack, stroke or really bad flare up of asthma, you contact the NHS. You might be worrying about a mole that's changed shape, or grown larger, and think you need to contact your GP.

Everyone in the NHS really appreciates people taking pressure off services for conditions that can be safely managed with over-the-counter medicines, and taken care of at home. It is crucial that for anything else that you do not risk life or wellbeing – contact NHS 111 online or by phone, get in touch with your GP, visit an Urgent Treatment Centre, or for emergencies go to A&E or call 999.

If you want to know how Derbyshire's NHS services are changing in response to the pandemic visit: <https://joinedupcarederbyshire.co.uk/public-info-covid-19/help-us-help-you> STAY ALERT - CONTROL THE VIRUS - SAVE LIVES

Julie Coles Practice Manager 01298 84315

**Tales of the field-** During the months of lockdown our village has transformed from a village filled with overflowing campsites and many walkers to a quiet haven, allowing us all time to think and reflect on how the pandemic has changed not only our village but the whole world.

Within our village there has been much to applaud, the weekly NHS clap, the 'in your own garden' party to celebrate VE Day and the consistent support given to those people shielding and isolating.

Lockdown has been easier here than in many places. We have the luxury of walking without fear of social distancing rules being broken and we have local businesses adapting to offer delivery or drive by collections ensuring we have the necessities.

On my daily walk I have noticed every new lamb and every calf that has appeared in the fields, when the bluebells appeared in a neighbours front gardens I was delighted, when rhododendrons appeared and disappeared in just one day I felt cheated of their display by the wind and rain.

The pandemic has bought much heartache to many people throughout the world we have all been touched by it in some way, we have all found our way to cope with the isolation and worry covid has demanded. My garden has been my salvation. I have planted so many seeds I can hardly fit in my greenhouse, the flowers and vegetables are growing better than ever due to constant care and attention and the chickens have a new porch and a swing, which they sadly do not seem to appreciate. This years' chicks are venturing out in the sunshine and whilst the world is cautiously waking up to this new normal, the animals in the fields and gardens around me seem oblivious to the turmoil and fill me with hope that this new world will be a better version of the old world.

A world where the simplest things like a hug and enjoying a Sunday roast together shall never be taken for granted again.

### Messages of thanks from the Communities

**'A big thank you to the shops** who have remained open during the Coronavirus crises to feed us and **our pets**, the **post office** for our financial transactions, the **garage** for keeping those vehicles on the road that need to be on the road and the **surgery** for looking after our health. Sympathy for those businesses that have had to temporarily close their doors and staff that have been put on retention. Also, those people who voluntarily see to the needs of the more vulnerable of our community.

It is a huge collective effort, and one that we understand, regarding social distancing and keeping trips to a minimum and not being able to socialise with anyone outside our own household. It is very difficult not being able to visit family and friends, and family and friends not being able to visit us, particularly elderly relatives.

However, if our actions help us to stay safe and keep the village safe then I think we can live like this for a while to help slow the progress of this virus. Any added burden to the NHS at this time when they are exhausted and losing their own lives is a small sacrifice to make on our part.

We are lucky in where we live in a relatively sparsely populated area and, as a community, by adhering to government guidelines we are doing all we can do to keep us all safe.' Janet Wigley

**Pets Matter-** Thank you to the team at "Hartington Paws" who, although initially could not open, had an on line service which was much appreciated.



## Heartfelt Thank You's

I would like to thank both the Village Shops, The Post Office, the Dig Street Surgery and the Y.H.A, and all our friends, neighbours and relations, not forgetting all the members of St Giles Church who have kept in touch with prayers and messages of comfort, and all who have been kind and thoughtful in these difficult times, The Staff at Hartdale Motors, as they are a valuable part of our community. Margaret P.

I wish to say a very big thank you to John Grosvenor of Thatchers, Dig Street, for the wonderful job he has done on the village seats. As Liz knows it is something I have complained about for a long time, as the seats were really neglected. I was really pleased to see John working so hard, and making a really good job. I told him "it's very good of you to do this" to which he replied "I love this village and I really like the people, it's a really good community". So thank you John for your hard work. M.Partridge

I would also like to thank Al and Keith for all their help with our shopping, they have been so kind and thoughtful. Also, Keith makes a brilliant paperboy! I think he should have a proper bag like paperboys have. Thank you so much for your help in these unusual times. We have a wonderful community and everyone watches out for each other. Margaret P, Viv B, Hilda B, Jackie D, Kath B and Peter B.

Thank you to the Farm Shop who had an "afternoon cream tea" service on line- it was lovely

We wish to express our gratitude to all who have offered help and assistance in these difficult times A special "thank you" to Sandra Lovatt, Mick Riley and Sue and her staff at the corner shop Many thanks for all your support. David and Jennifer Brindley.

Welcome back to Fiveways, Cheese shop and the Farm Shop on Monday 15<sup>th</sup> June- it is good to have you back.

---

## Hartington News

**St. Giles Church Hartington** Despite Government restrictions being lifted, the Churchwarden and Parochial Church Council have decided that it is still not entirely safe to open the Church, although plans are in hand to thoroughly clean the Church and prepare for opening in the not too distant future.

At present the Church of England are not permitting services to be held either inside or outside the Church.

A daily service is available on line from our Derby diocese at [www.derby.anglican.org/streams](http://www.derby.anglican.org/streams)

Prayer messages and thoughts from St. Giles Church are also available by email. If you would like to receive these please email Liz Hitch at [liz.hitch@btinternet.com](mailto:liz.hitch@btinternet.com)

**Hartington has lost two amazing ladies during the past few months- Mrs Bel Kerr and Mrs Lesley Veit. The impact of these 2 women on the community of Hartington and much wider cannot be underestimated.**

**Bel Kerr Remembered.** Rose Annabel Kerr was born on 17<sup>th</sup> August 1923 in Eastbourne, Sussex, the youngest child and only daughter of Arthur Crook, a general practitioner, and Margaret nee Wetherbee (daughter of George Wetherbee, a Royal Academician). She and her three brothers were privately educated, two brothers became doctors and one an architect, and all four joined the army when the Second World War broke out. After the war she

studied at the Guildhall School of Music and earned her music teaching certificate – she played both the piano and oboe, taking part in orchestral concerts from time to time. At this time she met Ronald Kerr who had served in the same regiment as her brother Peter. Bel and Ronald married in 1950, and had two daughters in 1951 and 1953. Living first in Tunbridge Wells and then in Sussex, they moved to Winchester in 1965. After Ronald died in 1979, Bel moved house a number of times but eventually settled in Hartington where she became actively involved in village life as church organist, Brownie leader and secretary to the PCC. She was also an active member of the Sheen W.I and frequently organised fund raising events for the Church and other charities. A well known figure about the village, she continued driving, gardening and playing the organ well into her nineties. She remained Church organist until she was 95, having been awarded a Bishop's badge for outstanding services to the Church some years before. She will be greatly missed. C.R.D

**Lesley Veit Remembered** Lesley immersed herself wholeheartedly in her adopted village from the start: from being Secretary/Treasurer (and more) of the Village Hall Committee; growing and selling plants at the May Market to raise monies towards the Flower Festival; organising the Planters to bring colour into the centre of the village; helping with the annual Well Dressing; helping to clear/tidy up the Churchyard;

and producing and directing Curtain Call productions, were amongst the many things that she was involved in. She was always the first to respond to a cry for help with village and community events and her famous cheese and chive scones, for the refreshments at the annual Flower Festivals, are unforgettable!.

Lesley is described by those who knew her well, as kind, gentle and a stickler for details. This was evident when she took over as producer of "Curtain Call"; Lesley spent hours researching detail for all of the productions, and, a particular bus trip to Derby to access material and a "blow-up doll" for the production of "Allo 'Allo" remains in memory. The doll was tested on the bus on the way home, much to the amusement of the passengers, some of whom were members of Biggin WI. The village owes Lesley a debt of gratitude, not just for the amazing productions of "Allo Allo" and "The Twits" but also for her dedication to the Village Hall, which she ran almost single-handedly during some very difficult times. She kept the Village Hall going when the numbers on the Committee dwindled to just a handful and kept it afloat when serious historical building failures almost closed it for good. For that, we must all be very grateful, as it took its toll on her health. She loved the Village Hall, seeing it as a precious asset belonging to the local community and fought her utmost to make sure that everyone could benefit from it, both then and for the future. But, above all, Lesley will be remembered for her knowledge and love of all things gardening, for which she was second to none. Thank you, Lesley

**Hartington Burial Ground- Hartington Town Quarter Parish Council** -During May the Parish Council commissioned work to provide a new Garden of Remembrance as the existing Garden is now full. This provides over 60 additional spaces just beyond the path at the top of the burial ground. The ground has been dug to a depth to allow for the burial of ashes, stones and rocks removed and grass seed planted to return the area to a green space. Full details of how to apply for a space are on the Parish Council Website. At the same time the rubble and debris from the top corner has been removed, the existing Garden of Remembrance has been tidied up and completely new paths laid to make access to the whole burial ground more accessible.

**The Parish Council and Hartington Community Group** – At the start of lockdown we compiled a street by street list of the target group- we had over 50 homes. We then allocated volunteers to each street area; these volunteers then contacted the

vulnerable people and have been, on a regular basis, doing shopping and any other things needed – We used the same system to collect, safely, in the village hall- magazines, books and jigsaws etc which were then distributed by the volunteers.

The shops have been and still are, amazing, delivering out to the communities and outlying farms The Post Office has been a focal point and helped in so many ways. When contacted by Alstonfield with requests for duvets and sheets to be made into scrubs, Sue agreed to be the base to receive. We were inundated- thank you to everyone who gave them. They were then taken to Alstonfield to be made up. The PCC placed the Church foodbank boxes in the Post office and they have been extremely well supported – thank you. Deliveries to Ashbourne foodbank have been made on a regular basis by Dr Chris Dullage Church Warden

On Monday 25<sup>th</sup> March, when the YHA closed, they contacted Hartington Community Group to ask if we could distribute the food that they had left on closure- which was a significant amount. A team of volunteers, using the list the parish council and HCG had produced made up over 60 boxes and distributed to those on the list.

The surgery has done a prescription run, manned by volunteers for many, many years, delivering prescription out to the villages and outlying farms. That has continued with a smaller team organised by Debbie and Mervyn King

The school has always had a strong link with the community and church; over the past 12 months they have been engaged with an intergenerational pilot (1 of only 10 schools in the country) with the Youth Sports Trust (YST). Details of the programme is on the schools' website. Class 2, which has 9 children – are called "Active Buddies" and have partner buddy, aged over 70yrs, from the village. They have named them "Silver Sports". Prior to Covid 19, they would meet in the village hall where they enjoyed a range of activities. During lock down they have managed to maintain contact by exchanging letters and sending simple exercise cards – even a video demonstrating the exercises.

We were able to celebrate safely VE Day with "afternoon tea on your street"- well distanced, the businesses and many homes were decorated with bunting.

The seats around the pond and pumps have been renovated and painted thanks to Mr John Grosvenor The "Virtual Open Gardens" has proved a great success, hosted on the Village website- hartingtonvillage.com. It is hoped we will reach a 100 days of different photographs on July 9<sup>th</sup>.

Janet has turned her entrance to the cottage yard into a small garden centre- many plants donated by the community and the winter plants removed from the Planters. When collecting plants to take home generous support was placed in a donation box which has realised over £200. The proceeds have been given to various charities as well as the village hall.

**50 miles in 50 days** - Inspired by other fundraisers and the difficulties which cancer patient's face, local school girl Sophia, who is only 9 years old, has decided to raise money for The Christie Hospital which is one of the largest cancer treatment centres of its type in Europe. Specifically, Sophia has chosen to support a brand new development of the Christie Hospital which is to be built in Macclesfield. The new cancer centre is being built to provide cancer care to patients in Derbyshire, Staffordshire and Cheshire. The new centre will be closer to home for many patients meaning that they no longer have to make the long journey to Manchester every day for their treatments.

Despite not enjoying running Sophia decided that she would set herself a target of running a mile a day for 50 days. Her first run started on the 24th May and her final and 50th run will be on the 12th July. Hence her 50 miles in 50 days challenge.

At the time of writing this Sophia has just passed the half way mark and has run every day without fail to try and raise as much money as possible for her chosen charity. So far she has raised over £1100, which has already gone directly to the charity.

Sophia would like to say: "Thank you to everyone who has sponsored me so far. I love the messages people have sent and this really helps me on more difficult run days. I am still running a mile everyday. I am starting to find some runs a bit easier but some days, especially when the weather is hot, the runs are still really difficult. I can't believe that so many people have sponsored me and that such a lot of money has been raised already. I originally set a target of £100 but the total raised so far is so much more than that. Thank you so much".

If anyone is able to support Sophia there are a number ways that this can be done. She has her own



fundraising page at <https://www.justgiving.com/fundraising/sophia-webley> where you sponsor her and also see a daily update of the runs she has done. Sue Bruce at The Post Office and Hartdale Motors have kindly got sponsorship forms which people can add to. Also there are collection boxes in AJ&S Peach Newsagents and in The Village Stores.

We hope to put a small piece in the next News and Views to let you know how the runs went and how much Sophia finally raises.

**Planters-** Hartington is once again very grateful to the Parish Council who provide the funding and John Bailey of "Hartington Paws" for purchasing and "planting up" the 13 planters around the village. The watering and maintenance of the village green planters will be done by a team on a weekly basis; thanks to Janet, Kate, Al & Keith, Liz & Stuart, Brad and Liz. The planter in the Dale is cared for by Linda Wright, those next to the Stanner Cottage- by Abi Fisher, The Garage by Janet and team as well as Eileen, the church by Andy Farmer and the one at Nettletor Farm by Morsons- a big thank you to everyone.

**Hartington Village Hall Re-opening:** After 4 months our village hall will, subject to any government advice, be re-opening during the week of 13<sup>th</sup> July. Work on our new roof should begin the week before but we are advised that activities will be unaffected by the work once the tiles are stripped off.

Our Management Team have carried out a risk assessment and as a result have amended a number of our procedures and identified a small number of groups that will start in July, with other groups looking to return in September. **We are taking bookings again for September** on <https://hartingtonvillagehall.co.uk/booking/> or contact Liz Broomhead on 07900 054802. There will be a section on our website that will outline the changes we will be making as a result of the Covid-19 outbreak [www.hartingtonvillagehall.co.uk](http://www.hartingtonvillagehall.co.uk). Groups that will start again in July are the Parish Council, Pilates, History/Ancestry group, our Rural Social Group (Tuesday 28<sup>th</sup> July) and our own Management Team. We plan to welcome back in September a new Beavers group, Wednesday Dance Club, badminton, archery, and flower arranging.

Trustees have decided that **2020/21 hire fees will remain unaltered** : £10ph for the Main Hall for local users and £15ph for external groups. The Upper Bakehouse is available at £6ph for local users. We are looking into the feasibility of holding the Saturday dance scheduled for August 1<sup>st</sup>.

We will use social media and telephone calls to inform you of activities but also look at our website for information on the calendar.

While we have been closed we have been improving the facilities and environment. Volunteers have redecorated all toilet areas and corridor, decorated the entrance hall with new displays, repaired and painted all internal doors, repaired and varnished wooden window frames, made improvements to the Upper Bakehouse, further improved the new sound system, repaired a water leak and bought and fitted a new kitchen water heater. The total costs of the water heater, including fitting, were met by a £700 grant from Cllr Simon Spencer, DDC. Keith Quine Chair of Trustees

### **Hartington Village Hall 2019/20 Lottery in aid of a new hall roof:**

Our final lottery draw took place on 10<sup>th</sup> June. With total prize monies of £1800 we saw £3,225 raised towards the replacement roof which we anticipate costing c£28.5K. We have had confirmation that after delays over use of materials and Covid-19 that work is finally scheduled to start on 6<sup>th</sup> July, weather permitting! We have received grants totalling £20.2K from four sources, the remainder of the monies being raised through various activities including the lottery. As several of the grants required match funding we would not be looking forward to a new roof without the support of so very many from our community. A HUGE 'THANK YOU'!

Our latest lottery winners were:

- May 2020. Number 16 Emily Broomhead, granddaughter of Brian and Liz
- June 2020. Number 36 Graham Smith, Hartington Dance Club.

Of our 12 winners 9 are Hartington residents (or in the case of Emily, related) with three wins from members of the Wednesday Dance Club.

Keith Quine  
Chair of Village Hall Trustees.

### **Hartington Village Hall lottery 2020/21:**

Back in 2018 village hall trustees asked our user groups what should be the priority in seeking to improve our facilities. The overwhelming response was to replace our veteran 48 year old boiler. With work on a new roof about to begin we are now turning our attention to **replacing the entire heating system**. With an anticipated cost of £15.5K, including removal of asbestos wall panels and flue, we took our first step with Rob Tenty's birthday bash in March which raised over £2.5K to pump prime our fund raising. We have also secured a £10K grant so

are closing in on the funds needed. The new roof will be insulated so with a new heating system the Hall will be warmer and cosier than at any point in its history.

***We will be shortly launching our 2020/2021 lottery with all profits to be allocated to our 'Boiler Appeal'.*** As with our 'roof' lottery we will have a total prize fund of £1800 (with 10 monthly prizes of £100, plus December's winner receiving £500 and the August 2021 winner receiving £300. The first monthly draw will be on Wednesday 9<sup>th</sup> September. The cost of a lottery ticket is a discounted £50 to cover all 12 monthly draws (or £5 a month but all 12 monthly draws must be paid for). We will be contacting all our current subscribers with details of the lottery. ***If you are interested in subscribing to the new lottery then either speak with one of the Trustees or contact Garry on [lottery@hartingtonvillagehall.co.uk](mailto:lottery@hartingtonvillagehall.co.uk).***

In the past two years we have secured over £31K in grants to improve the Village Hall and this has only been possible because we have successfully raised £10K through our own efforts, with the 2019/20 lottery being an example. If we are to continue to successfully bid for grants we need the continued support of our community through activities such as the new lottery.

**Digital Hartington:** The requirement for computing skills and for access to the internet has increased considerably since lockdown as more people make use of laptops, tablets and smart phones to communicate with family and friends, shop online or follow the Hartington Village Website ([www.hartingtonvillage.com](http://www.hartingtonvillage.com)) and Facebook pages. The Hartington Community Group Facebook page membership has now risen beyond 300 and provides news updates from the website. It is also a location where posts from the community can be made directly.

Lockdown came just as members of the Digital Hartington Group had begun training, supported by Rural Action Derbyshire, to provide help and guidance to those in the community who require assistance with their technology skills. All this has been put on hold but hopefully, in the not too distant future, training and offers of help to the community can resume.

The Hartington Village website has been able to provide updates from Derbyshire Dales DC and information from local businesses on changes that have been taking place and on takeaway and delivery details from local establishments. As the lockdown eases the website can help local businesses advertise



changes they are making or events that are taking place. Contact [digitalteam@hartingtonvillage.com](mailto:digitalteam@hartingtonvillage.com) with details using "POST" as the subject in the email.

As I write Hartington Virtual Open Gardens has reached Day 80 with over 50 different gardens from around the village featuring. We aim to keep daily posts going until Day 100 on July 9th. Photos should be sent to [hartingtongardens@btinternet.com](mailto:hartingtongardens@btinternet.com) (Max 5 photos per garden). After this it is hoped to continue to post a weekly update of garden photos that takes us through the Summer and into the Autumn

**Informal Flora ---- Flower arranging classes to re - start in September.** Linda and Sarah both hope that we shall be able to re-start our flower arranging classes on Wednesday 23rd September, 2020, in Hartington Village Hall. This will of course depend on how the current situation develops, and also on whether you, our former attendees and all newcomers who might like to join us, feel willing to take up where we left off! We will require everyone to comply with the current regulations, and Linda and I will be following the ever changing data to ensure we are compliant. It would be helpful to us, in this first instance, if those thinking of attending, pre- booked their place. This can be done by contacting myself or Linda direct. Linda 07757844977, Sarah- 01298 84319. Please let us know as soon as possible so that we can start to make plans. Hope we can all get together again in September! Thank you. Sarah.

**WELL DRESSING 2020-** We are hoping to hold the blessing of the Well on the 12<sup>th</sup> of September at 3pm. The main Well this year will represent V E Day which we missed celebrating in May. The school Well will be based on a rainbow. We are unsure if we will be still social distancing but we are planning to limit the dressing to 4 people. Please come forward if you would like to help and we will put you on a rota. We will start the dressing from 10.30 on Monday 7<sup>th</sup> September in the Village Hall. Lucy Anatt

**The Royal British Legion Poppy Queen-** Under the circumstances it has been agreed that the 2020 Poppy Queen will be deferred this year. There will also be no commemoration of VJ day in August.

---

## Biggin News

**Biggin Community Support:** Here in Biggin, members of the community are offering to do shopping, deliver papers, post letters, walk dogs and deliver prescriptions from the surgery if neighbours are self isolating and have no family or friends who are able to assist. We do a bit of shopping for quite a

**Hartington C of E Primary School** closed its doors on Friday 20th March to all pupils who were not classed as vulnerable or having key worker parents. These were strange times as the whole of the country went into lock down. As a small rural school we continued to open our doors to any of the above children and also provide lunches to pupils who were entitled to free school meals. I would like to thank my staff and Mrs Stubbs for continuing to put there own health at risk to support the school at this difficult time. During this period we created a home learning page on the web site for children to access fun activities, collective worships, exercises, educational web sites and links to help them and parents during this period. We also created a private Forum for the pupils to upload photographs of what they were doing during this time and enable them to keep in contact with staff and each other

We finally re-opened our doors to a very different style of schooling on the 1st June. This allowed EYFS, Y1 and Y6 pupils along with vulnerable and key worker pupils to attend school, maintaining the social distance. A voice from the community commented on that first day as to how wonderful it was to hear the children laughing and shouting in the playground again. The children have soon settled into school life and we hope it won't be long before we can welcome the rest of them back. Unfortunately we won't be able to undertake our year 6 leavers assembly or traditional end of year residential trip to Lea Green. But that won't stop us wishing our year 6 pupils good luck for the next stage in their schooling life. This year we have pupils transitioning to Lady Manners, QEGS and Buxton Community and we wish them all well. As one door closes another one opens and we are looking forward to welcoming three new pupils in September. We are not sure what September will hold for the school, if we will be able to hold our community lunches or welcome outside agencies to the school but you can be sure we will continue to teach our young children to the best of our ability and prepare them for what lies ahead. I hope you all continue to keep safe and healthy and look forward to the day we all meet again. Tracy Blackwell - Head teacher

few people but for the majority it's the security of knowing that support is there if needed. At the beginning of the pandemic this was the main worry for people who suddenly couldn't go out or who couldn't get a supermarket delivery.

We are very grateful to Biggin Hall Hotel for distributing their fresh produce to the village when



they had to close and for the lovely VE Day cupcakes that every household received. Biggin's stay at home VE Day street party was much enjoyed as was the colourful bunting which decorated the village. A big thank you to everyone involved.

The Biggin Community Support group has facilitated the sharing of information about resources, services and activities. It has a fluid communication structure using a designated Facebook Page (<https://www.facebook.com/groups/333924060898748/>), the VE Day What's App group, the Biggin School texting and blogging system, an occasional news sheet to all households and word of mouth. School, church, village hall, Biggin Hall Hotel and the Waterloo as well as individual residents are working together to support the community and respond to each new situation as it arises.

**St. Thomas's Church Biggin:** Despite Government restrictions being lifted we are not permitted to open until the archdeacon is satisfied that we meet the requirements of the Church of England risk assessment so that we may use the church safely. We aim to do this as soon as possible and to open on a Wednesday to allow private prayer and to restart the flower rota. At present the Church of England are not permitting services to be held either inside or outside the Church. The PCC would be grateful for any offers to join a cleaning rota to enable us to open the church more often. Please contact Julia if you are able to help at this time.

**St Thomas's Photography Competition.** We are holding a photo competition (closing date 31st August). The theme is "in and around Biggin." All photos must be landscape not portrait as we will be using winning entries for a fund raising calendar. Entry forms will be more widely available at various location in the coming weeks. Further information is currently available on Facebook @StThomasBiggin or on posters around the village.

**Biggin C of E Primary School** -What a dreadful feeling for a Headteacher, back in March having to temporarily close the school indefinitely. We were all worried about what would happen and when we would be able to return to school and see each other again. A very surreal time indeed!

We were sad too. Sad about all the lovely activities and trips we had planned, sporting competitions and sports days which wouldn't take place, VE Day Celebrations which now wouldn't be celebrated and our gorgeous Year 6 children preparing for transition to high school. Everything closed down so suddenly and we leapt into the unknown with remote learning. Once again the strength of the Biggin school

community has shone through. It's been very different but we have so much to be proud of.

Our children have responded to the challenges brilliantly. We quickly adapted to using Purple Mash and Accelerated Reader at home. We used BBC Bitesize, White Rose Maths and the Oak National Academy plus lots of other resources produced in school by our fantastic team and prepared as packs for individual children to collect and return into school. However we will remember our remote learning for much more than this. The Blog has helped us keep in touch and share everyone's wonderful experiences.

We have shared collective worship, made Easter gardens, baked cakes, created models of the human skeleton, written poetry, learned about computer coding, written book reviews, upcycled plastic bottles, given thanks to the NHS and to Biggin Hall for their food donations, cooked pasta, watched birds, learned about classical music, practised our Spanish, celebrated birthdays, made Easter bonnets, created beautiful art, named ducklings, learned to become farmers, made models of Paris, saved the planet on World Earth day, shared photos of orchids, learned phonics using Miss I's super videos, gazed at the stars, gone on bike rides, completed nature trails, made Easter bonnets, looked after new-born lambs, created folk art in the style of Sue Prince thanks to her special video for us ('Thank You' Sue!), reviewed the picture books on the Kate Greenaway shortlist, kept up to date with the news, learned about the circulatory system, told stories, helped our families, made VE Day bunting, raised money for the NHS in the Ashbourne Spellathon, enjoyed saying tongue twisters, learned some new songs and sung some old ones, learned to touch type, been active, been thoughtful and been kind. Wow!

And throughout all this the staff and governors have been brilliant too; always thinking about the children, supporting each other, looking after everyone and generally keeping everything going. You have been wonderful.

Now we are gradually reopening school again. It has been lovely seeing the youngest and the oldest children enjoying spending time together and having fun. Next week we will see nearly all of our children in school again. We give thanks that everyone is safe and everyone is well. School may be a little different but it feels good to return to a bit of normality. We don't yet know what September will bring. What we do know though is we will have the determination, resilience, teamwork and love to thrive and flourish.

**Biggin Village Hall** has been closed since the beginning of the lockdown. We have turned off the

electricity and suspended bin collections to save money. The building is checked every week and a register of checks is kept to comply with insurance requirements. The bunting for VE day and the flagpole in the pinfold helped with the limited celebrations we all managed in early May.

Guidance is coming through on the measures we will have to take for reopening but it seems unlikely that we will be able to resume use in any meaningful way soon. We have kept in touch with Live and Local and had a couple of remote meetings with local and national organisations to discuss what live theatre or music shows may be possible as restrictions ease. Nothing definite yet but hopefully we can put something on soon.

**Waterloo Inn** - We are hoping and working towards opening on the 4th July with certain restrictions in

place. As to date of this email (17<sup>th</sup> June) we have had no guidelines. We do have music booked for July and August but I have no idea if these will be allowed to go ahead at this stage, please check with us nearer the time. We are still hoping to have our fun day on the 15<sup>th</sup> August, therefore if you wish to have a stall to raise money for your charity or organisation or for yourself please contact Stevie on 01298 84284; £5 per stall or a raffle donation would be gratefully received. Stevie is also asking for donations of old crockery for this day. Can I also say a big thank you to Sacha who has been so good as to plant all our flower pots for us and for Stevie in making some new ones. We have also purchased some new picnic tables and Steve has painted the old ones. We are looking forward to seeing new and old customers back to the Waterloo Inn. Debbie, Steve and Stevie

---

### **Earl Sterndale News**

**Earl Sterndale Church News.** After the government information for ending lockdown. The PCC, were advised by Area Dean ,Colin Pearson, that our church was still to remain closed. When we can open again, for: Sunday Services, Christenings, Weddings, School Activities, Festivals, Coffee Mornings, Fairs, and Bingo Nights. We will do our best, to make sure you know. At the moment we are working on organizing some church yard maintenance. We hope you are all well and keeping safe.

**Parish Council Help-** Earl Sterndale Church PCC would like to say a big thank you to Earl Sterndale Parish Council, for their very generous donation, of

£1000 for our churchyard maintenance and building restoration funds.

**Church Cleaning** Mr Jason Bentley, would like to thank Margaret Lamphard, Anne Thompson, Beryl Hodgekinson, Lynne Hodgekinson, Dan Holden, and Angela Campeau, for helping him clean and get Earl Sterndale Church ready, for what we hope, was not, our one and only Bingo night , this year.

**Welcome Legacy** It is with much appreciation, that, Earl Sterndale Church PCC have received a legacy of £1000 for church fabric funds. The legacy has been left to our church by the late: Mr Derek Drabble... White Knowel Park Road, Buxton.

---

### **Parish Register-**

22<sup>nd</sup> May, Lesley Patricia Veit. Burial, Hartington.

5<sup>th</sup> June, Thelma Pegg. Burial, Biggin.

9<sup>th</sup> June, Elizabeth Moorcroft. Burial, Biggin.

**Pomeroy Memorial Hall** We are looking at various ways to fundraise for Pomeroy War Memorial Hall. If you have any ideas for ways to fundraise we would love to hear from you. If you are able to help us with fundraising we would also love you to get in touch. One idea we had was to run a 100 or 200 club. If you haven't come across this before, it is like a mini-lottery. You would pay £12 per year to be in the club and each person is given a number. Each month there is a draw and half the money for the month is given away as prizes, the other half goes to Pomeroy War Memorial Fund. The more people there are in the club, the more and bigger the prizes. We aren't quite ready to go with it yet, but please let us know if you would be interested in joining our 100 club/200 club. Thanks so much for your support Jess O'Dwyer [pomeroywmh@talktalk.net](mailto:pomeroywmh@talktalk.net)


**Sam Rodger**


**Groundwork & Maintenance Services**

Driveways Patios Landscaping Fencing  
Walls Property Maintenance

07791 140704


**City & Guilds**


### R.M.S Electrical

25 Years Experience

Electrical, CCTV, Automated Gates  
Computer Networks  
Electrical Certification, PartP registered  
Experience in wiring smart homes  
Lutron Lighting

Trustworthy, Reliable Service  
Contact: Romney Smith, Biggin  
Mobile: 07889844796

### Manifold Fish & Chip Shop & Tea Room

The Market Square, Longnor,  
Near Buxton, Derbyshire, SK17 0NT

Food to take away or eat in. Cash only

<u>OPENING HOURS</u>	<u>LUNCH</u>	<u>EVENING</u>
MONDAY	CLOSED	CLOSED
TUESDAY	11.30 – 1.30	6.00 – 8.00
WEDNESDAY	CLOSED	CLOSED
THURSDAY	11.30 – 1.30	6.00 – 9.00
FRIDAY	11.30 – 1.30	6.00 – 9.00
SATURDAY	11.30 – 1.30	6.00 – 9.00
SUNDAY	CLOSED	CLOSED

Outside tables on the patio available. Children's menu available.  
Small parties catered for (seated area for 23 people inside).  
Telephone orders and table reservations welcome.  
**Shop 01298 83317 or Mobile: 07814 205984**

### The Ashbourne Shoe Company

A large walk around shop with possibly the largest selection of Mens, Ladies and Childrens shoes in the area.



Many Named Brands  
Including **Clarks, Skechers, Rieker, Marco Tozzi & Padders.**

Qualified Shoe Fitter in Store.

Find us just off Shawcroft Carpark in Ashbourne.

3 Wellington Yard, Off St John Street,  
Ashbourne, Derbyshire DE6 1GH  
Tel: (01335) 344065

Email: [info@theashbourneshoecompany.co.uk](mailto:info@theashbourneshoecompany.co.uk)

Website: [www.theashbourneshoecompany.co.uk](http://www.theashbourneshoecompany.co.uk)

### JOSH CRITCHLOW.

Plumbing and Heating Services.

All types of Plumbing, Bathroom Fitting, Tiling.

Registered Gas Fitter for Boilers & Servicing.

Contact Hartington 01298 84268

OR 07896258981.

**BEST FOOT  
FORWARD**  
Mobile Foot Practice



### Unable to reach or cut your own toe nails?

Nail trimming / Fungal nails / Cracked heels  
Corns & calluses (hard skin removal) / Athletes foot  
Reduction of thickened nails / Ingrowing toe nails  
All instruments single use only & sterilised to 134°C

Call Caroline SAC Dip FHPT / FHPP

Email: [bestfootforwardfhp@gmail.com](mailto:bestfootforwardfhp@gmail.com)

**Book your home appointment today.**

**07870 573 279**



**PAINT by PARSONS**

*Automotive refinishing*

Tel: 07976 513234

Email: [parsons593@btinternet.com](mailto:parsons593@btinternet.com)



Daniel will help you to reclaim or re-organise your garden safely & affordably.

Resident Tree Surgeons  
in the Derbyshire Dales  
& Staffordshire Moorlands

Mossytrees.co.uk

Spar Cottage, Earl Sterndale, Derbyshire,  
SK17 6BU.

01298 83815 or 07931661754



## PAINTING SERVICE

**BY DESIGN**

Fitted & Freestanding  
Furniture & Kitchens  
Professionally Painted  
Why replace when you  
can update?

Less money. Less hassle



**Tel. 01298 687392**

**Email: Quotebydesign@icloud.com  
for more info & brochure**

### **N Gilman - Livestock Fencing**

All aspects of agricultural fencing covered in  
the local area.

For a local, professional,  
Reliable service call Nick  
on 07773768785

### **Darren Barlow Handyman Services**

Building, Pointing & Roofing, Chimneys &

Lead Flashing Work

Flat roofs & Guttering

Kitchens and Bathrooms fitted. Wall and Floor Tiling.

Plumbing, Joinery, Carpentry, Windows & Glazing.

Small Landscaping and Mini-Digger Work.

Emergency and Insurance Work.

Local, Friendly, Reliable & Professional Service.

**Contact: Darren Barlow, Warslow**

**01298 84820 or 07973 468177**

### **SPONSORS OF NEWS AND VIEWS FOR 2020**

*We would like to thank the following who have sponsored the 2020 issues:*

Charles Cotton Hotel	84229
Devonshire Arms	84232
Cheese Shop	84935
Dauphin Antiques	687149
Anna & Laura Heeley, Emma Doak (Village Stores Hartington)	84222
Fiveways - Gift Shop	84459
Jug and Glass	84848

Waterloo Inn, Biggin	84284
Biggin Hall Country Hotel	84451
Beresford Tea Rooms	84418
Hartdale Motors Ltd	84322
A J & S. PEACH Newsagent & General Store	84291
Farm Shop and Café	84496

PLEASE EMAIL, WHERE POSSIBLE, ITEMS FOR THE NEXT ISSUE BY Aug 15<sup>th</sup> to  
liz@broomhead.net or give to Margaret Partridge or Liz Broomhead.